



*Fight Against Fire*

[www.watexindustries.com](http://www.watexindustries.com)



# WATEX

*Fight Against Fire*

**WATEX Pumps Industries,  
established in 2009 has since been  
providing reputable firefighting  
equipment that is consumer friendly  
and at reasonable prices.**

We feel privileged to offer extensively engaging design, assembly as well as marketing high technology pumping systems and services to the ever-increasing infrastructural demands of UAE. WATEX Pumps supplies these products to authorities like DEWA, SEWA etc. as well as offering pumping solutions to local municipalities.

We strive to provide the latest technology and internationally-approved brands at affordable prices to all our customers. We believe in creating and maintaining consumer relationships in order to build mutual trust.



## Our Vision

Thinking, Planning, Implementing & Focusing on high manufacturing Standards to prepare every place safe for you



## Our Mission

To spread power of water against fire by manufacturing pumps with high quality & service for life according to global standards



## ABOUT US

# **WATEX Pumps Industries is privileged to be associated with the ever-increasing infrastructural demands of UAE.**

WATEX Pumps industries, established in 2009 has earned a reputation pumps and fire fighting products at competitive pricing with the added benefit of a customer friendly environment.

We strive to provide the latest technology and international approved brands at affordable prices to all our customers. Our core competency is our customer relationship. We have built a trust with our everyday consumer, which has provided us with regular business for over two decades.

## **Why Choose Us**

We strongly believe in great customer service and work towards the same. In doing so, we offer extended warranties and special offers that are provide by our suppliers and product manufacturers. Our staff is educated about the products are available for any questions or concerns you might have. WATEX PUMPS INDUSTRIES can offer to you a wide range of different types of pumps to be suitable for all applications, this all is between your hand by following the lastest updates of Global standerds we can ensure the 100% qualified pumps.

It is our mission to effectively provide high quality pumping systems in the United Arab Emirates and contribute to a better quality of life.

## OUR SERVICES

- **Firefighting pumps**
- **Water pumps**
- **Industrial Pumps**
- **Firefighting equipment**
- **Installation**
- **Testing commissioning**
- **Maintenance services**
- **Repairing services**
- **AMC**
- **Supply of assembled control panel**

Available In:

### - UAE

Abu Dhabi, Dubai, Sharjah, Ajman,  
Umm Al Quwain, Ras Al Khaimah and  
Fujairah

### - JORDAN

Amman



## CEO's Message

The company highly values its clients, viewing the clients of any company as vital to the company's success. It therefore places top priority on seeking out the most highly qualified and skilled employees to provide its clients needs on a continuous & regular basis.

We are highly proud to have been awarded UL, FM, LPCB & ISO certifications an internationally recognised standards that ensures services meet the needs of clients through an effective quality management system.

**Eng. Nedal Mahmoud**  
MD



PRODUCTION FACILITY

**ZAY7045FC**  
DRILLING & MILLING MACH

SPINDLE SPEEDS (RPM)

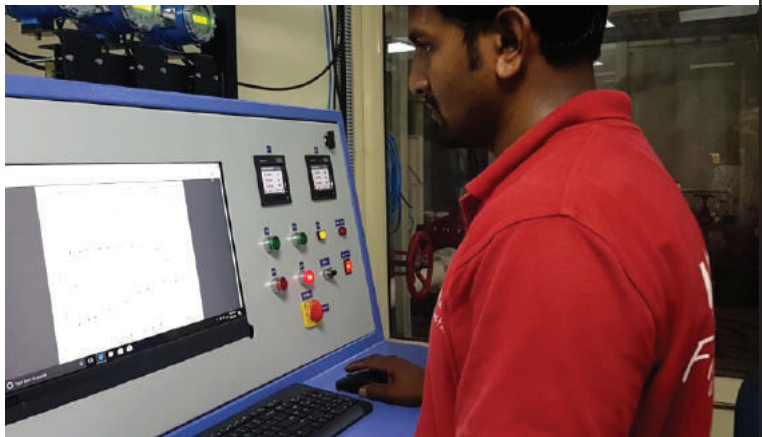
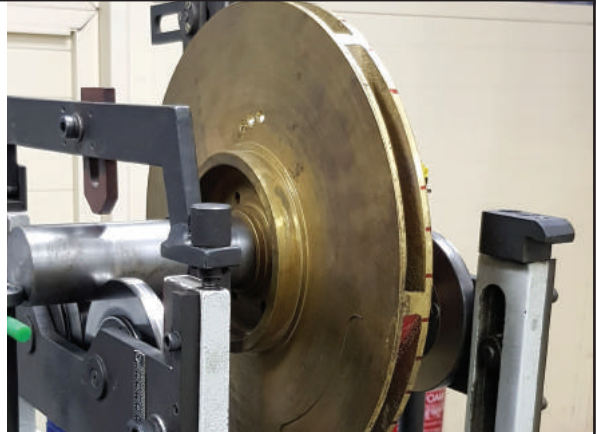
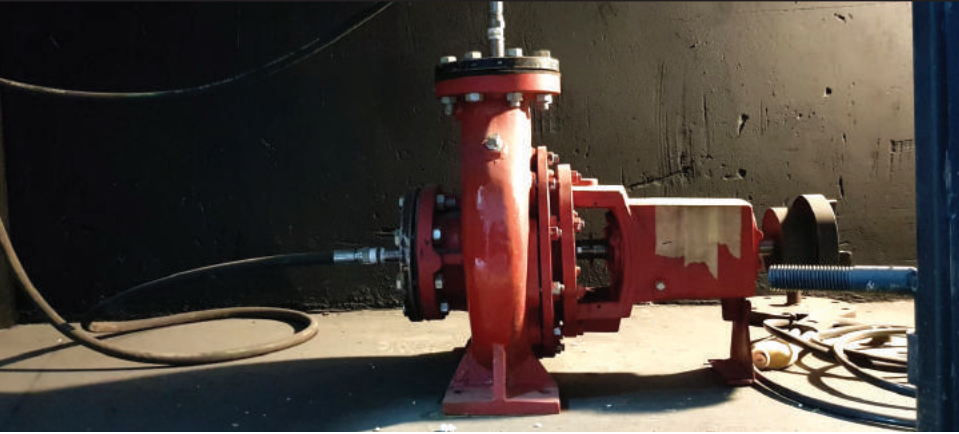
	50-HZ	60-HZ
I-L	90	96
I-M	145	175
I-H	260	310
II-L	375	450
II-M	710	850
II-H	1250	1500

NOTICE  
Change spindle speed or rotation direction ONLY when spindle is completely stopped.

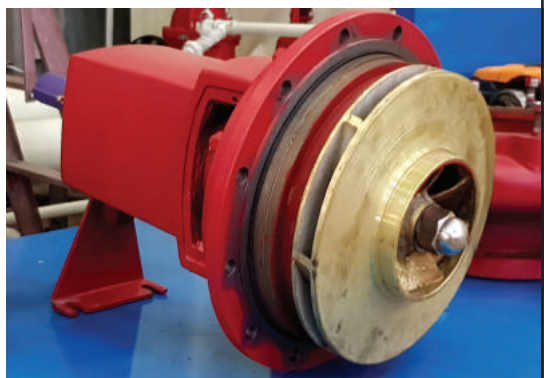
CE

SERIAL NO. 835  
DATE: 2017 10

**Design**  
**Manufacturing**  
**Testing**



# *Fight Against Fire*







## Operation Test

Our pump is to be subjected to an operation test at rated speed under applicable requirements. Performance curve are plotted showing the efficiency, brake horsepower (KW) and total head developed at shutoff at rated capacity at 150 percent of rated capacity and at selected intermediate capacities exceeding 150 percent of rated capacity.

## Impeller & Shaft Balancing Test

The sample impeller is to be installed in a calibrated dynamic balancing test apparatus. The impeller is to be evaluated in two correction planes as described in the standard for mechanical vibration -balance quality requirements of rigid rotors.



## Hydrostatic Pressure Test

Readings are to be taken of the maximum impeller imbalance and the location of the imbalance in the impeller for each plane.

There still be no rupture or leakage through the castings at the test pressure to be suitable as our fire fighting product.

# Vertical Turbine Fire Pumps



These pumps are used to transfer clear water for a wide range of applications, pump intake is either connected to the public underground water supply piping, or a static water source (e.g., tank, reservoir, lake). The pump provides water flow at a higher pressure to the sprinkler system risers and hose standpipes. Our vertical turbine fire pumps are tested and listed for its use specifically from UL for fire service as a third-party of testing and listing agency. Our pumps follows the main code that governs fire pump installations which is NFPA 20 (Fire Protection Association's ) Standard for the Installation of Stationary Fire Pumps for Fire Protection

## Vertical Turbine Type

Rated Flow - Q up to 2500 GPM

Pressure - P up to 328psi

## Features

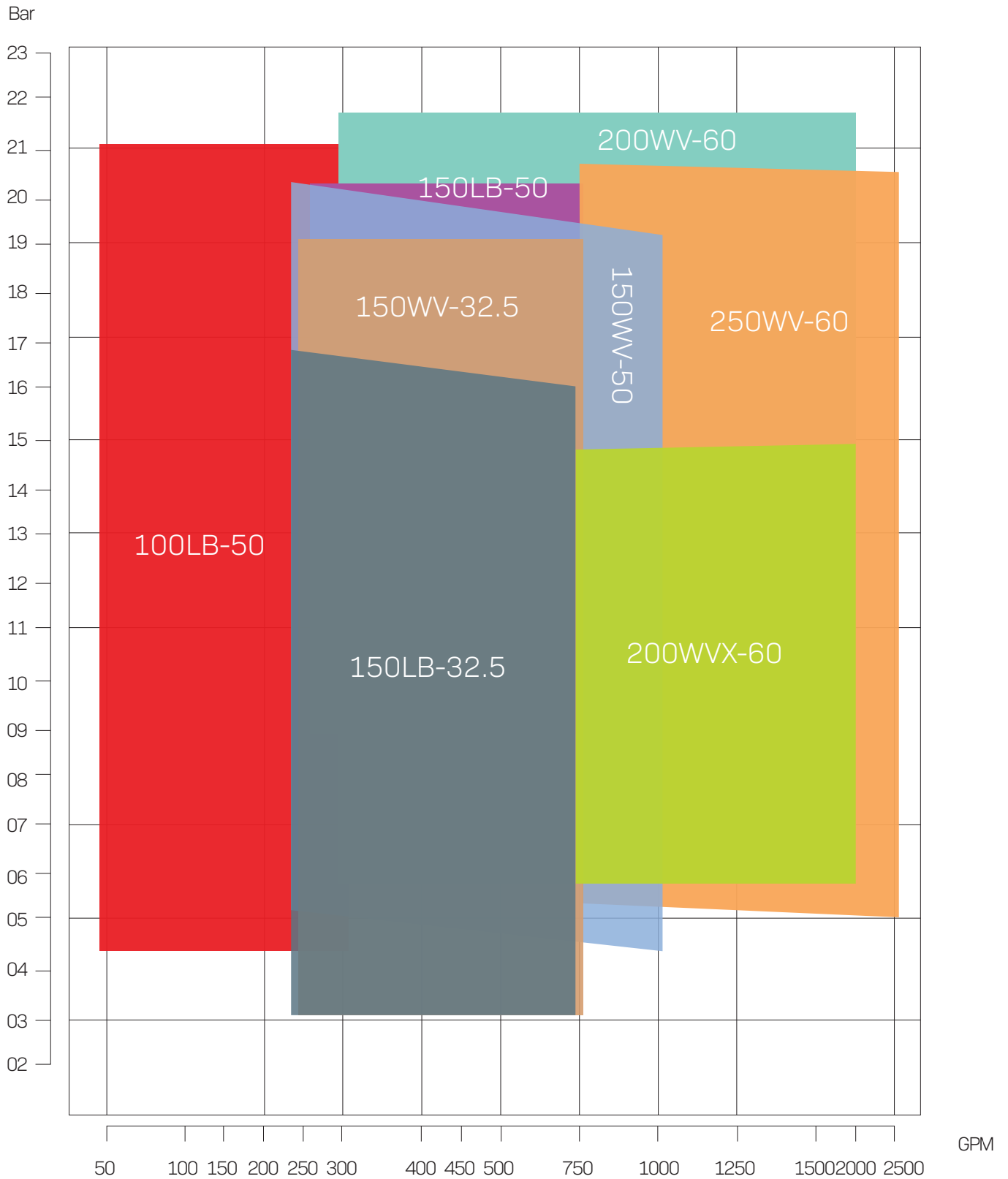
- Designed and built as per UL448g AND NFPA20 for maximum reliability
- Dynamically Balanced Impeller extends bearing life and ensures smoother operation
- Designed with less number of stages to be suitable for variable water levels
- Constructed in variety of metallurgies
- Available in 50Hz
- Drivers with gear boxes at electric and diesel speeds
- Designed for easy maintenance without interfering with piping
- Open line shaft, water lubricated construction for ease of maintenance
- Packaged systems available
- Self-Venting Design eliminates vapor lock and the need for automatic air release valve
- Efficiently Design Shaft to minimize shaft deflection
- Heavy Wall Thickness to provide for generous corrosion allowance
- Sealing arrangement is with packing design for heavy duty operation with integral flushing for packing lubrication
- Modular construction assures complete flexibility in selecting a pump
- Space-saver design, small footprint, ideal for retrofit



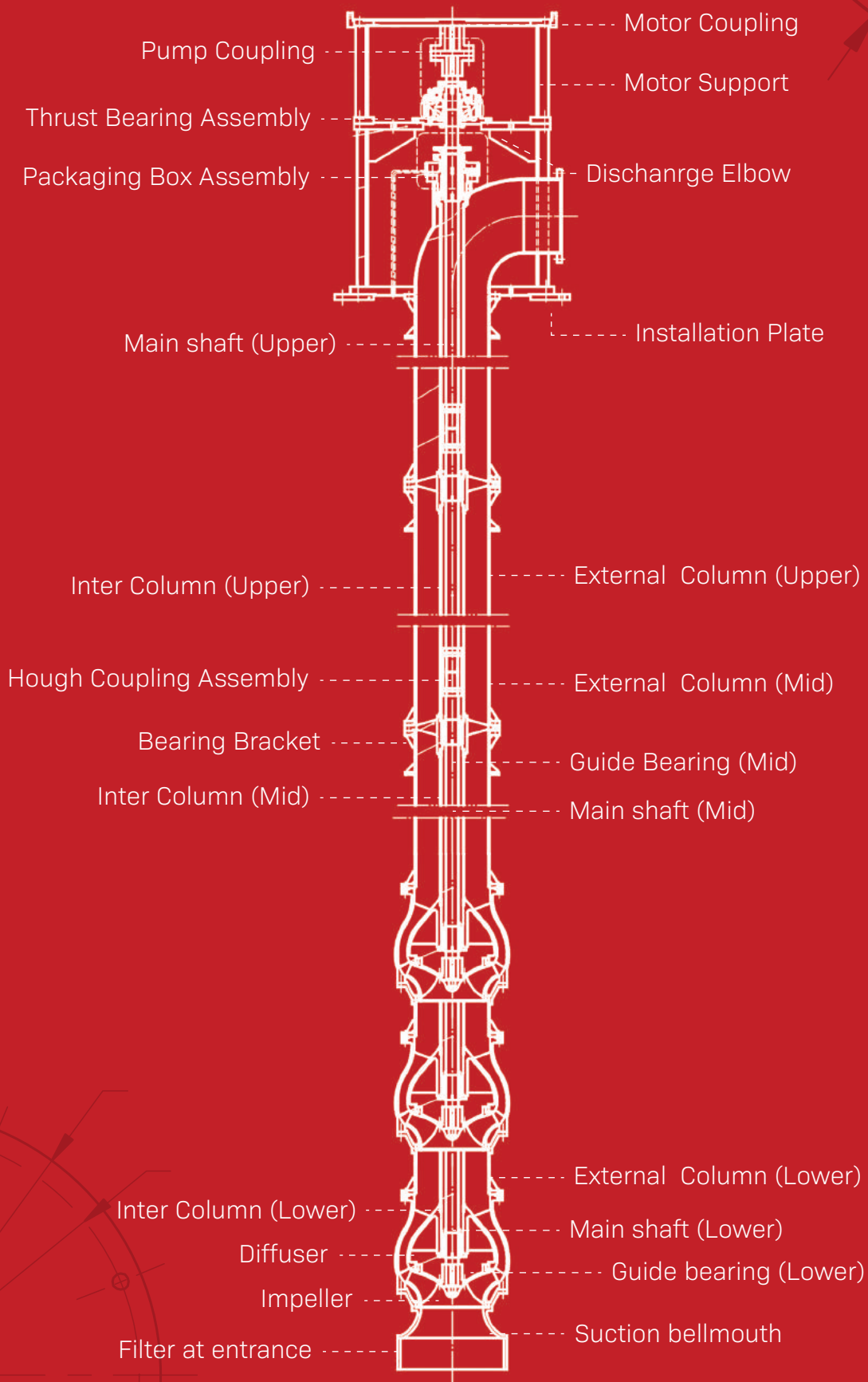
UL FILE NO. EX27224

# PRODUCT RANGE

## Vertical Turbine Fire Pumps Spectrum Chart



# STRUCTURE OF THE PUMP



# CERTIFICATE

## CERTIFICATE OF COMPLIANCE

**Certificate Number** 20180417-EX27224  
**Report Reference** EX27224-20170613  
**Issue Date** 2018-APRIL-17

**Issued to:** Watex Pumps Industries  
New Industrial Area Amman St, Shed 8  
Ajman UNITED ARAB EMIRATES

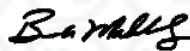
**This is to certify that representative samples of** CENTRIFUGAL FIRE PUMPS, VERTICAL TURBINE  
Model Designations: 100LB-50, 150LB-50, 150LB-32.5,  
250WV-60, 200WV-60, 200WVX-60, 150WV-50,  
150WV-32.5.

Have been investigated by UL in accordance with the Standard(s) indicated on this Certificate.

**Standard(s) for Safety:** UL 448, Pumps for Fire-Protection Service  
**Additional Information:** See the UL Online Certifications Directory at [www.ul.com/database](http://www.ul.com/database) for additional information

Only those products bearing the UL Certification Mark should be considered as being covered by UL's Certification and Follow-Up Service.

Look for the UL Certification Mark on the product.



Bruce Mahrenholz, Director North American Certification Program  
UL LLC

Any information and documentation involving UL Mark services are provided on behalf of UL LLC (UL) or any authorized licensee of UL. For questions, please contact a local UL Customer Service Representative at <http://ul.com/aboutul/locations/>

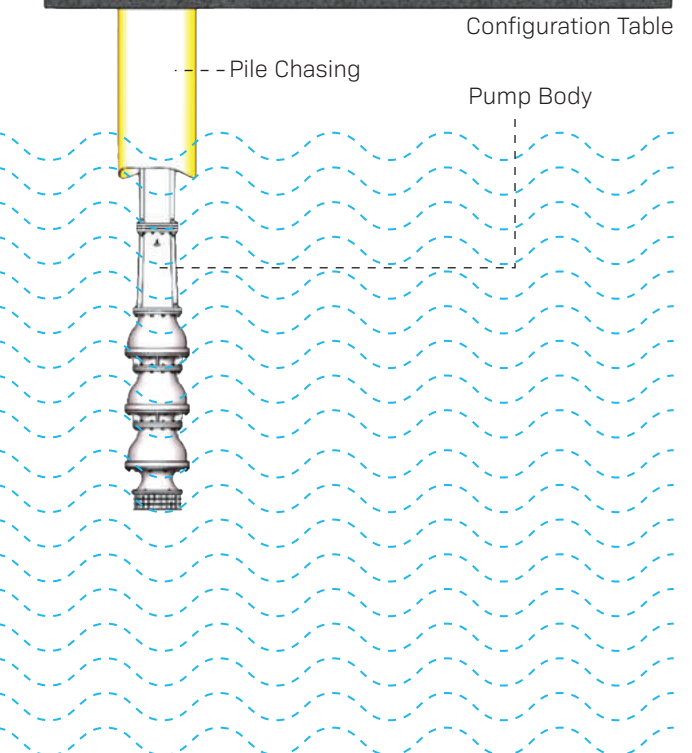
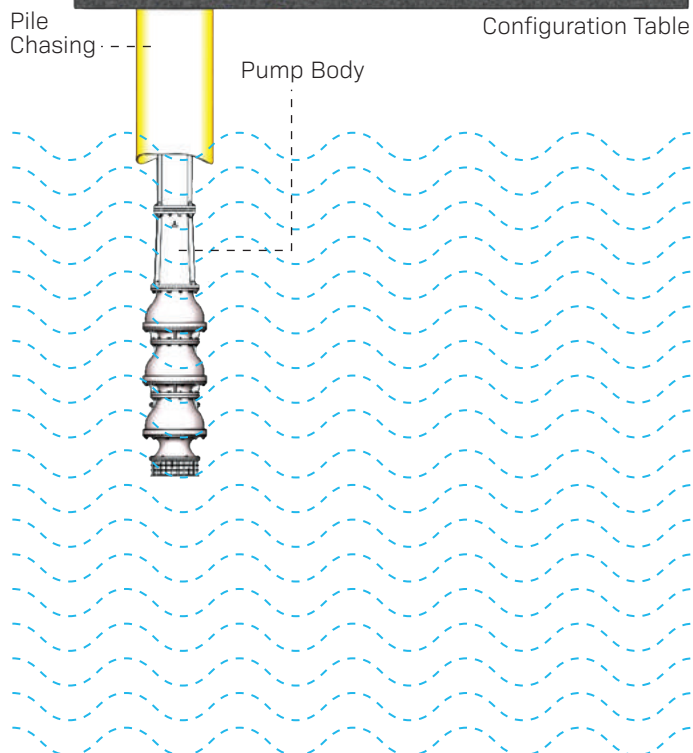
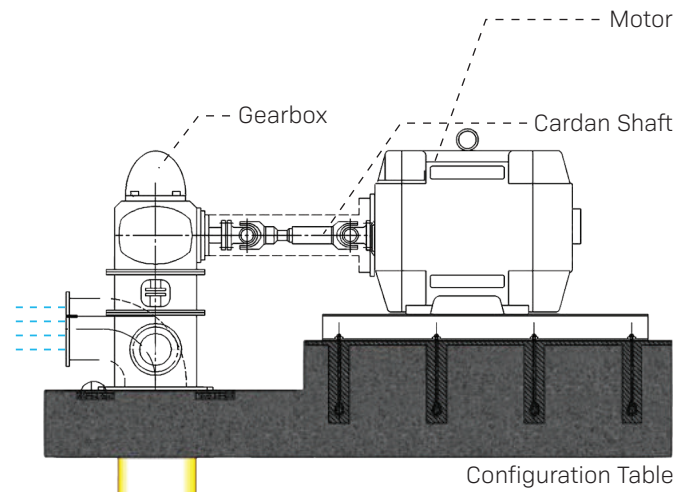
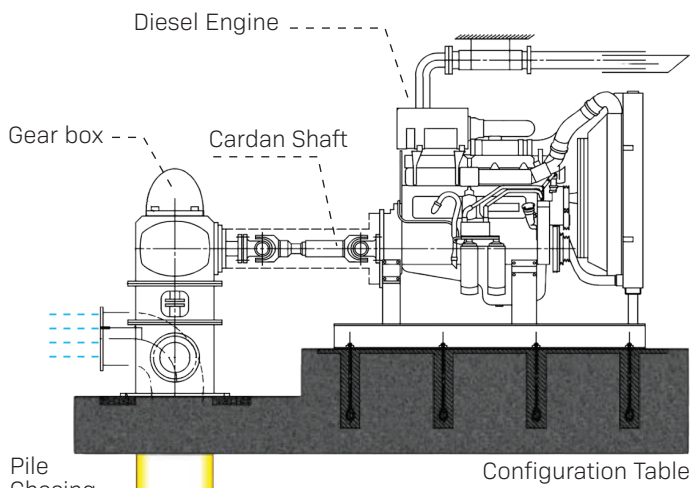


# ASSEMBLY OF PUMPS

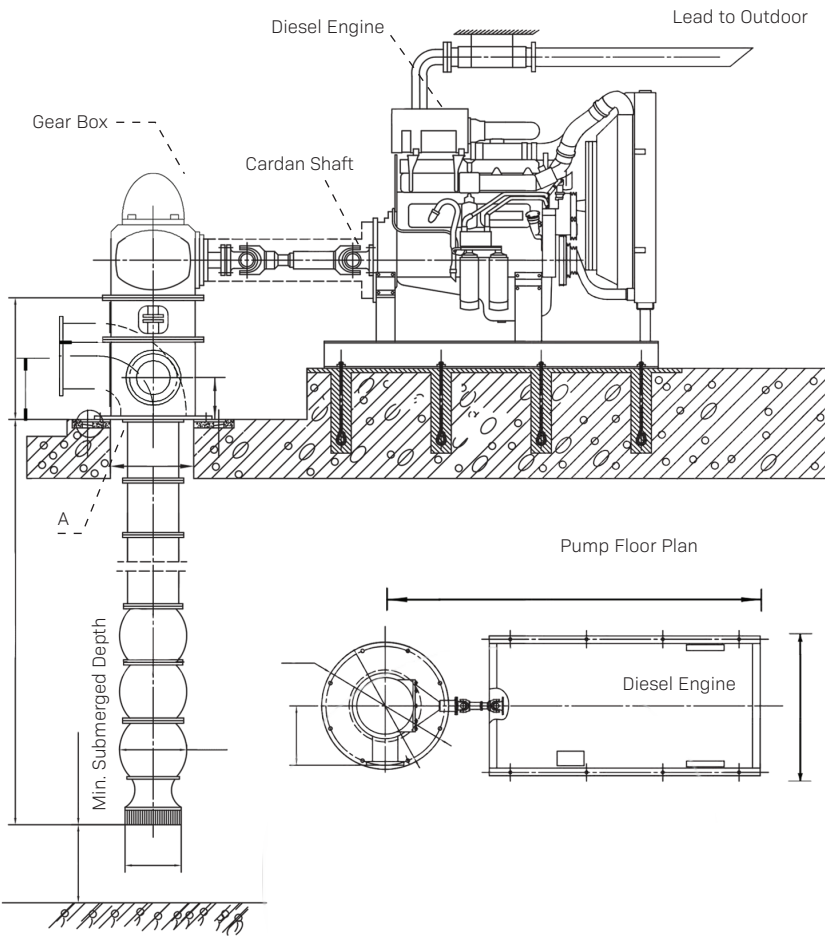


## Diesel Engine Fire Pump

## Electric Motor Fire Pump

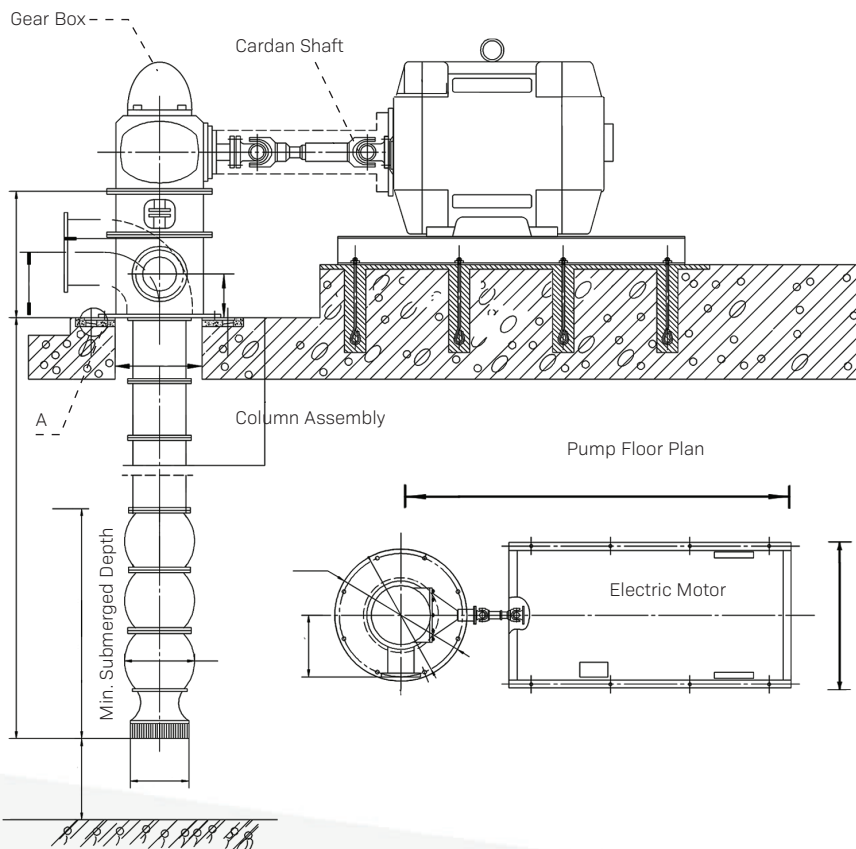
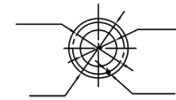


# PUMP ROOM ARRANGEMENT



Device No.	
Model	
Manufacturer	

Outlet Flange Dimension



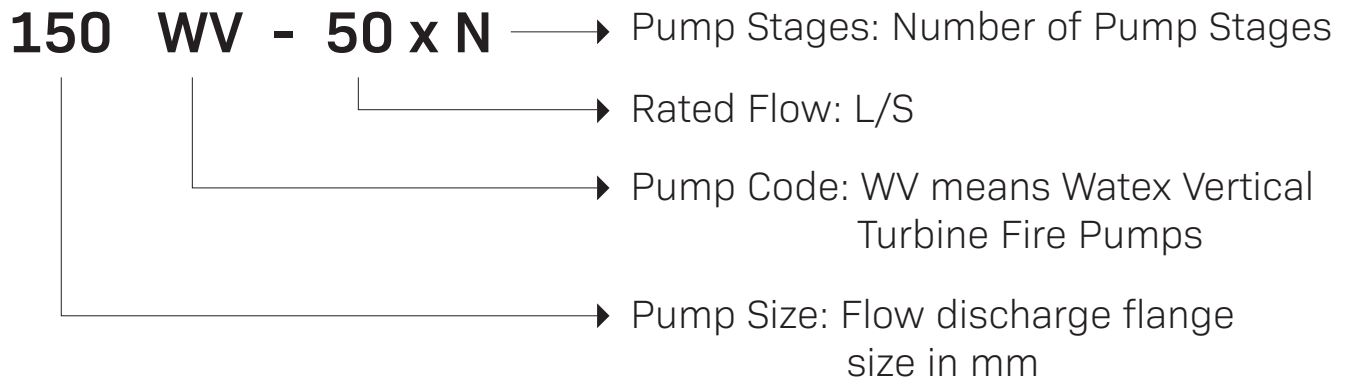
Device No.	
Model	
Manufacturer	

Outlet Flange Dimension





## MODEL CODING

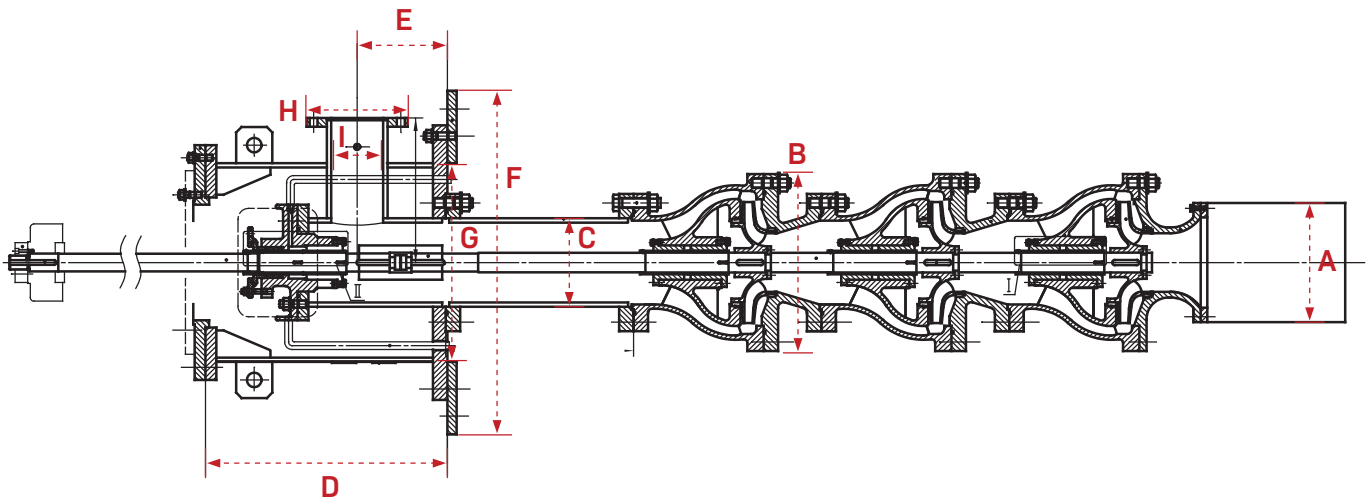


Example:

**200 WV-50**

Means Watex vertical turbine fire pump with rated flow 60L/S (=1000gpm) and discharge flange size of 200mm (8 Inch)

## Pump Part List & Dimension



	DESCRIPTION								
MODEL		100LB-50 (B16.5-CLASS150)	150LB-50 (B16.5-CLASS150)	150LB-32.5 (B16.5-CLASS150)	150WV-50 (B16.5-CLASS150)	150WV-32.5 (B16.5-CLASS150)	200WV-60 (GB/T9119-2010_DN200)	200WVX-60 (GB/T9119-2010_DN200)	250WV-60 (GB/T9119-2010_DN200)
	A -STRAINER	256 mm	256 mm	336 mm	256 mm	336 mm	436 mm	436 mm	546 mm
	B- DIFFUSER	340 mm	340 mm	490 mm	340 mm	490 mm	580 mm	580 mm	755 mm
	C- EXTERNAL COLOUMN PIPE	300 mm	219 mm	380 mm	219 mm	380 mm	325 mm	325 mm	317 mm
	D- HIGHT OF PUMP BASE	620 mm	700 mm	760 mm	700 mm	760 mm	860 mm	860 mm	970 mm
	E- HIGHT FROM THE GROUND TO MIDDLE OF BASE-B	180 mm	250 mm	250 mm	250 mm	250 mm	275 mm	275 mm	350 mm
	F- MOUNTING PAD (OUTER DIAMETER)	700 mm	800 mm	950 mm	800 mm	950 mm	-	-	-
	G- MOUNTING PAD (INLET DIAMETER)	480 mm	480 mm	550 mm	480 mm	550 mm	-	-	-
	H- FLANGE OUTLET DIAMETER	230 mm	280 mm	280 mm	280 mm	280 mm	375 mm	375 mm	450 mm
	I- FLANGE INLET DIAMETER	100 mm	150 mm	150 mm	150 mm	150 mm	200 mm	200 mm	250 mm
PART	IMPELLER	Z00Cr18Ni9 (Corrosion-resistant steel)							
	CASING	Q235B ( steel with good plasticity, toughness and weldability, as well as a certain strength, good cold bending performance )							
	SHAFT	2Cr13 (Martensitic Stainless Steel 420)							
	BEARING	Rubber+0Cr18Ni9 (Stainless Steel)							
	DISCHARGE FLANGE	Q235B ( steel with good plasticity, toughness and weldability, as well as a certain strength, good cold bending performance )							
	BOLTS	0G18Ni9							

# VERTICAL TURBINE FIRE PUMP SUBMITTAL



## Fire Pump System

FLOW RATE(GPM)

-----

PRESSURE(BAR)

-----

**ELECTRIC DRIVEN + DIESEL DRIVEN + JOCKEY PUMP**

*Fight Against Fire*

[www.watexindustries.com](http://www.watexindustries.com)

# Horizontal Fire Pumps

Horizontal Single Stage, Single Flow Volute Casing Centrifugal pumps with axial Inlet. WS series and WE series for fire fighting Application are designed according to NFPA20

Types	Applications	Performance Range
Split Case End Suction	Fire Hoses Fire Hydrants Sprinklers	Flow Rate Up to 2500 Gpm Head Up to 250M

## Design & Construction Features

- The pump complies with the standard for pumps of fire protection services UL448
- This pump is UL listed under file No. EX27018 & No.EX27019
- Closed balanced impeller at G 6.3 balance quality grade, specified in ISO 1940-1
- Can be fitted with wear ring secured in a manner that will not permit rotational or axial movement
- The pump fitted with shaft sleeve
- Available in electric motor and, or engine driven

## Branch Position / Flanges

- Suction Branch: Side / Inline
- Delivery Branch: Side / Inline
- Flanges comply to ANSI B16.1

## Pump Consist of

- One Electric Motor Driven Pump
- One Diesel Engine Driven Pump
- Control panel for Automatic & Manual Operation UL-FM Listed
- Pressure Vessel
- Steel Skid

## Installation And Use

These pumps are widely used in firefighting applications for supplying waters towards pips to the system and industrial applications. The pump should be installed in an enclosed Environment or sheltered from inclement weather its suitable for with clean water and with liquids that are not chemically aggressive towards the materials from which pump is made.

## Our Duties

- Testing and Commissioning of Pumps
- Delivery to the site
- Approval Certificate
- Load Certificate
- Warranty Certificate



# Split Case Fire Pumps



Series of WS (WATEX SPLIT CASE) fire pumps are serialization products as Horizontal Single Stage, Single Flow Volute Casing Centrifugal pumps with axial Inlet which designed according to NFPA 20 for firefighting Applications.

## Models

- WS 80 - 270 • WS 100 - 310 • WS 100 - 360 • WS 125 - 290
- WS 125 - 360 • WS 150 - 460

## Split Case Type

Rated Flow - Q up to 2500 GPM  
Pressure - P up to 420psi  
Temperature - T up to 105 C  
Shaft Sealing Soft Packing

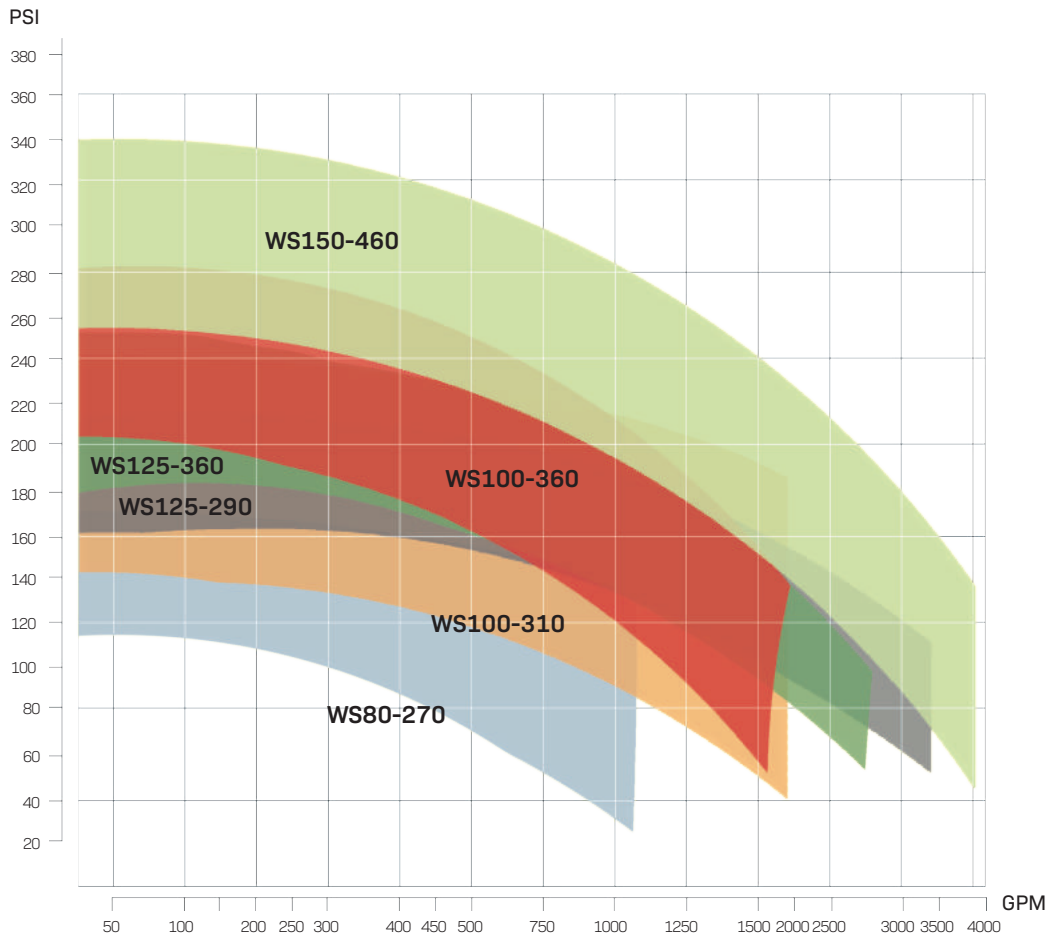


## Features

- Designing applies to NFPA20 Standards and specification in accordance with UL448 and FM approval
- Max shaft power point is attained by hydraulic performance instead of pump cavitation, which truly qualified for NFPA20 requirements, as well as ensure safety and reliability of pump units
- Adaptable of electric motor and combustion engine as prime mover
- Varied revolving speed or performance pumps can be supplied according to user's requests
- Max shaft power point is closed to the point of 150% rated capacity therefore the power and cost are low
- Pressure at shut off point small which require lower pressure rating of fittings or accessories, save cost for whole unit
- Single model covers wide performance range, no need to purchase different models with benefits clients by reducing inventory and shorten delivery

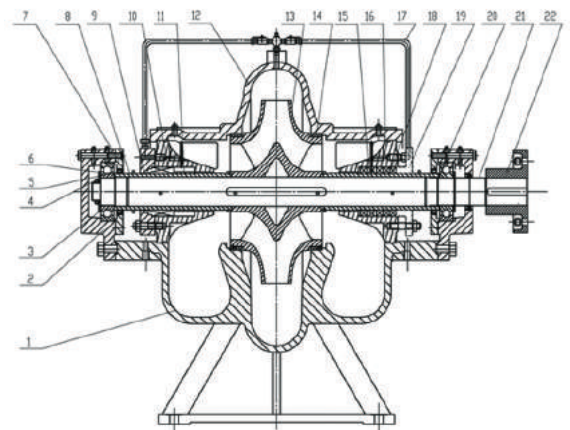
# PRODUCT RANGE

## Split Case Fire Pumps Spectrum Chart



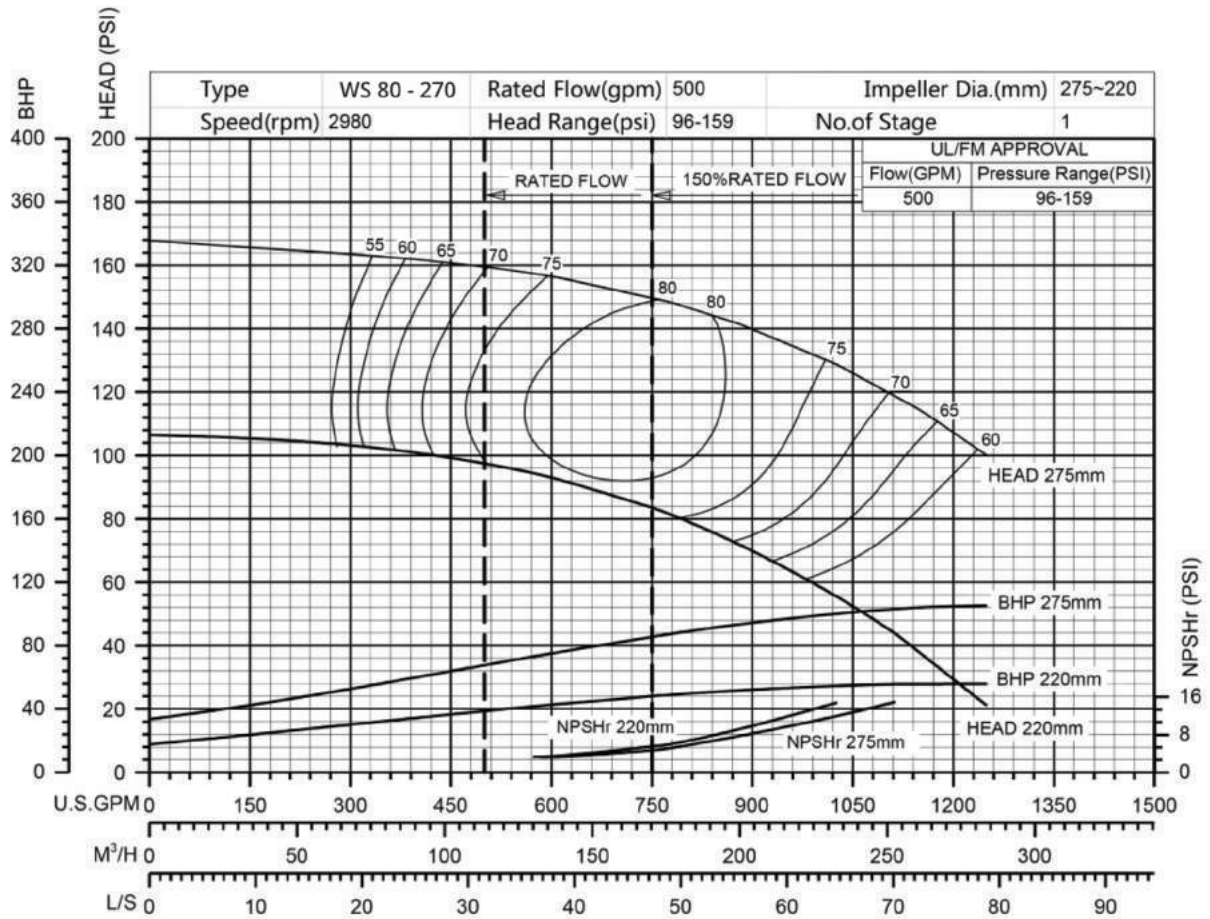
## PRODUCT SPECIFICATIONS

No	Part Name	Material	No	Part Name	Material
1	Casing	Ductile Cast Iron	12	Casing Cover	Ductile Cast Iron
2	Bearing Housing	Cast Iron	13	Impeller	Stainless Steel/ Bronze
3	Deep Groove Ball Bearing	Bearing Steel	14	Impeller Ring	Stainless Steel/ Bronze
4	Lock Nut	Carbon Steel	15	Packing Ring	Stainless Steel
5	Lip Seal	Rubber	16	Seal Housing	Cast Iron
6	Bearing Ring	Carbon Steel	17	Flushing Pipe	Stainless Steel/ Bronze
7	Bearing Gland	Cast Iron	18	Gland Packing	Oil Immersed Asbestos
8	Shaft Sleeve	Stainless Steel/ Bronze	19	Packing Gland	Cast Iron
9	Mechanical Seal Gland	Cast Iron	20	Bearing Liner	Carbon Steel
10	Mechanical Seal	Corrosion Resistant material	21	Shaft	Stainless Steel
11	Seal Bushing	Stainless Steel/ Bronze	22	Coupling	Cast Iron

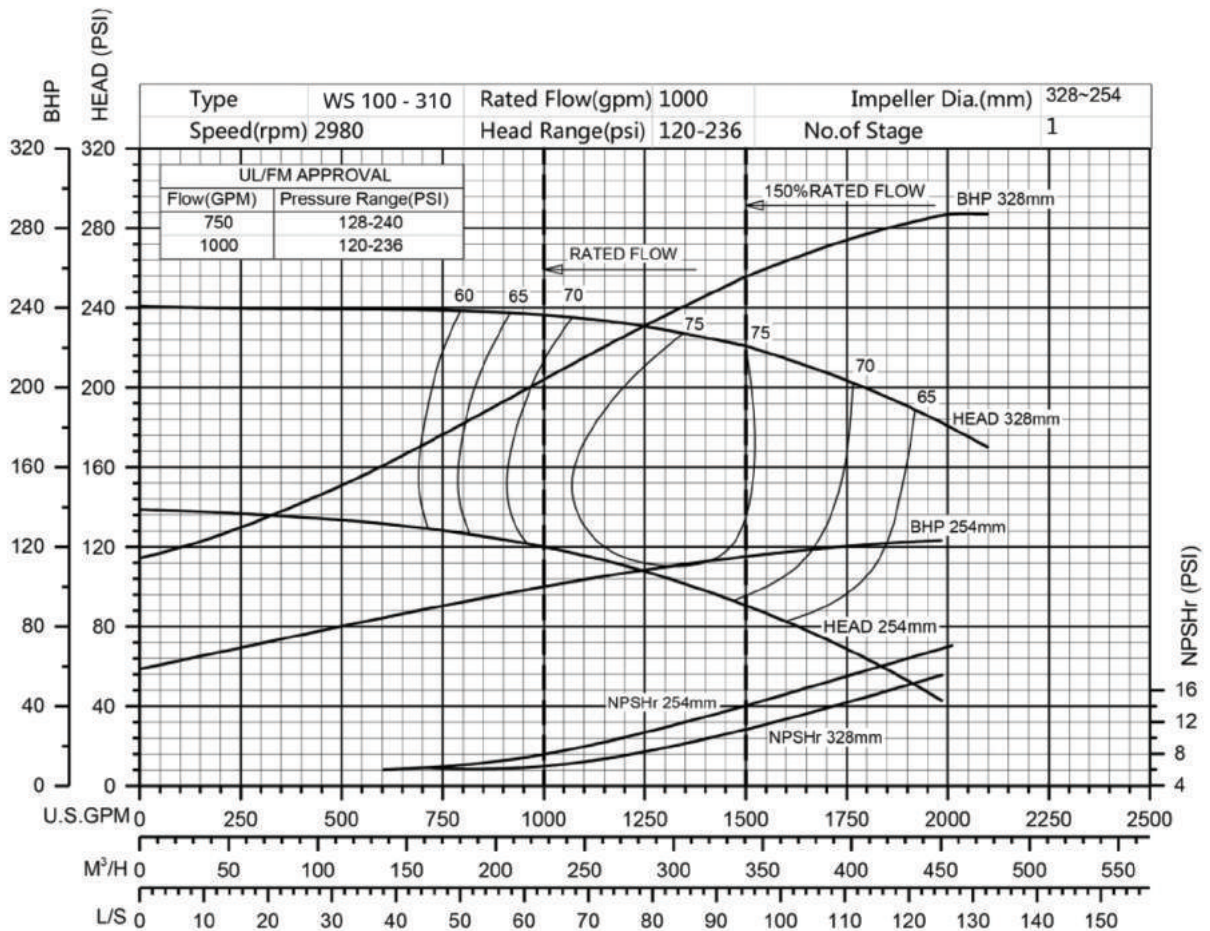


# PRODUCT RANGE

# WS 80 - 270

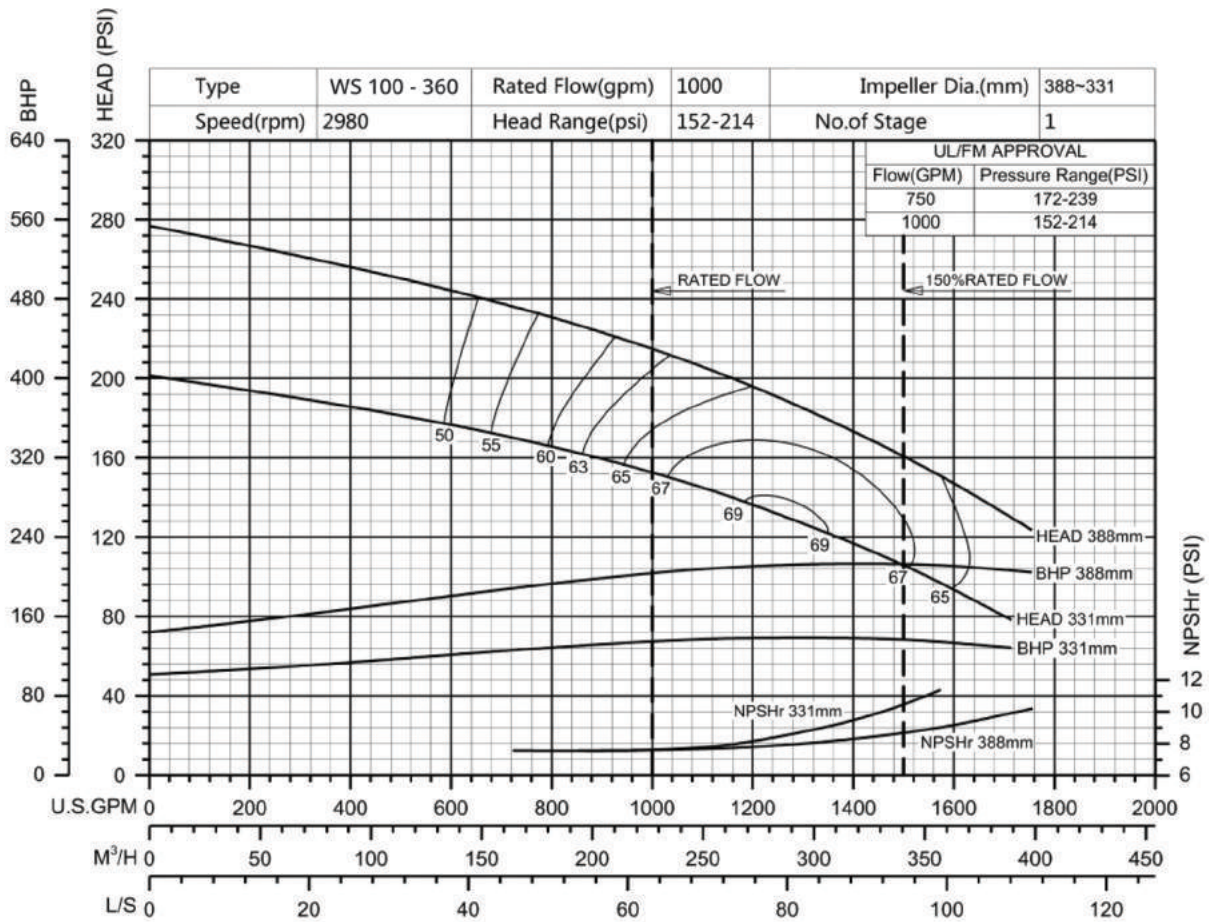


# WS 100 - 310

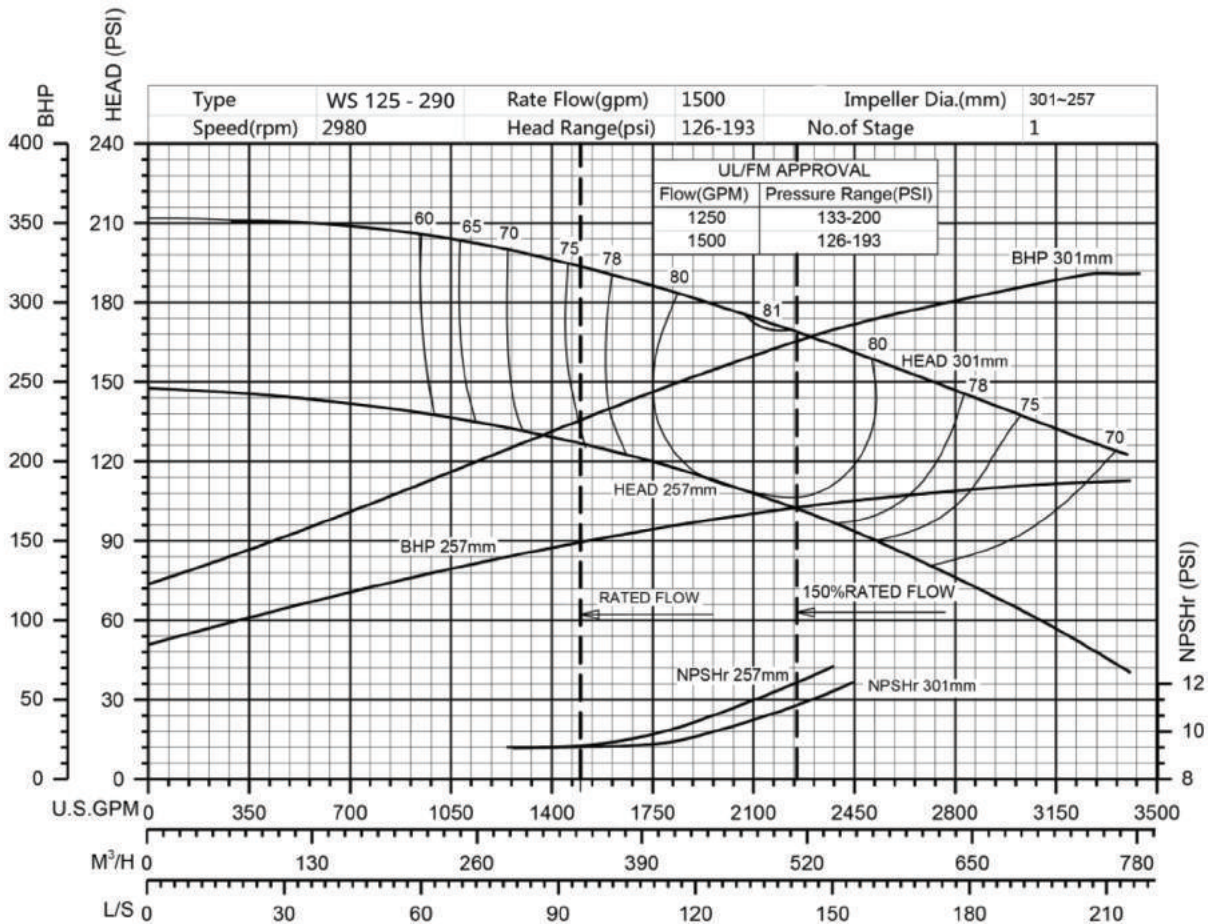


# PRODUCT RANGE

# WS 100 - 360



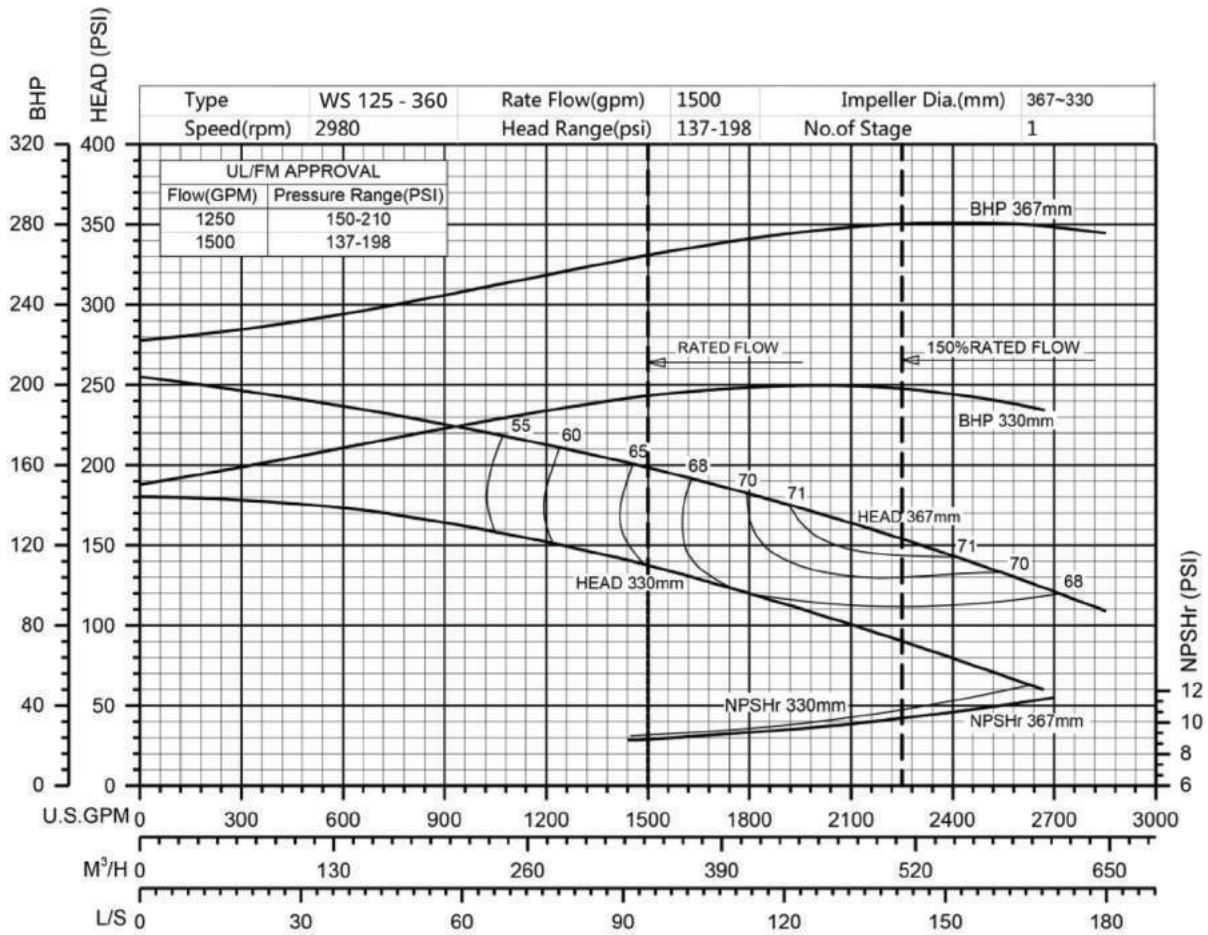
# WS 125 - 290



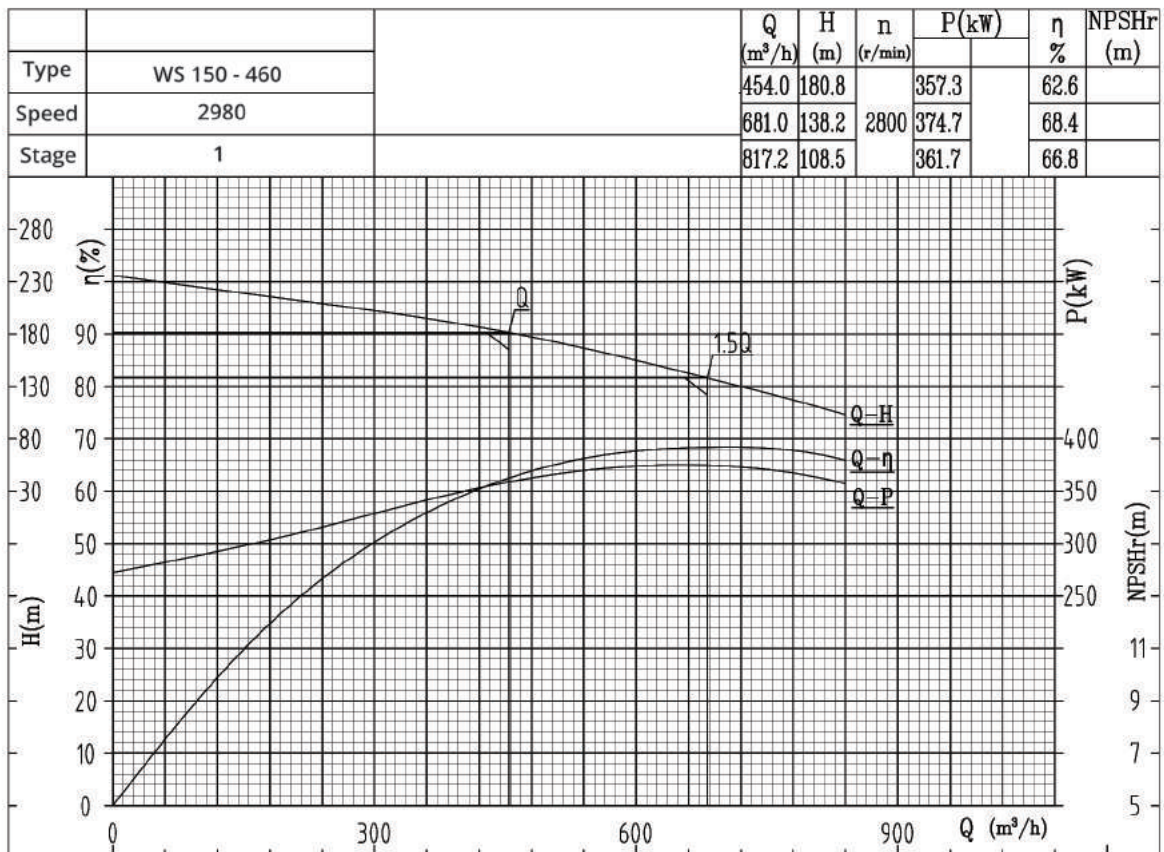


# PRODUCT RANGE

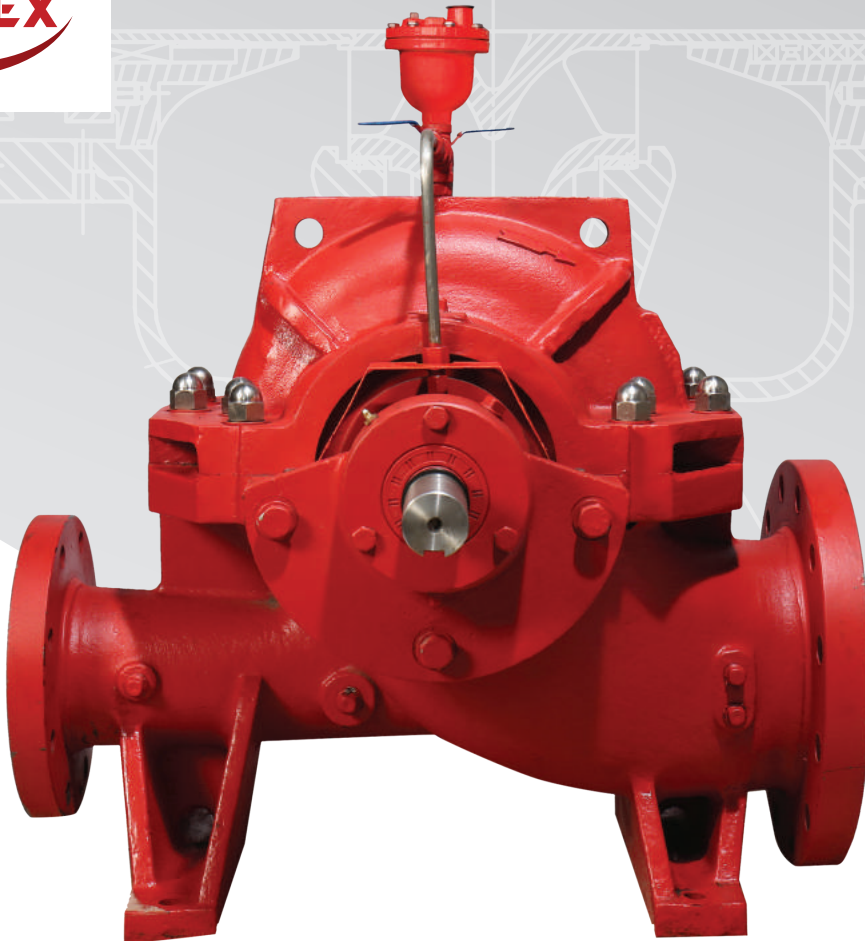
# WS 125 - 360



# WS 150 - 460



# SPLIT CASE FIRE PUMP SUBMITTAL



## Fire Pump System

FLOW RATE(GPM)

PRESSURE(BAR)

**ELECTRIC DRIVEN + DIESEL DRIVEN + JOCKEY PUMP**

*Fight Against Fire*

[www.watexindustries.com](http://www.watexindustries.com)

# End Suction Fire Pump



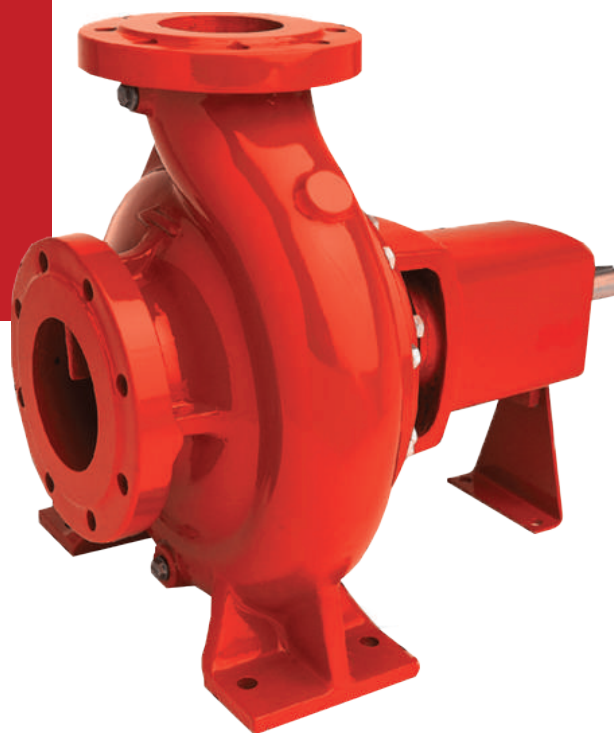
Series of WE (WATEX End Suction) fire pumps are serialization products as Horizontal Single Stage, Single Flow Volute Casing Centrifugal pumps with axial Inlet which designed according to NFPA 20 for fire fighting Applications.

## Models

- WE 32 - 200 • WE 32 - 260 • WE 50 - 260 • WE 50 - 315
- WE 65 - 260 • WE 65 - 315 • WE 80 - 260 • WE 80 - 315
- WE 100 - 260

## End Suction Type

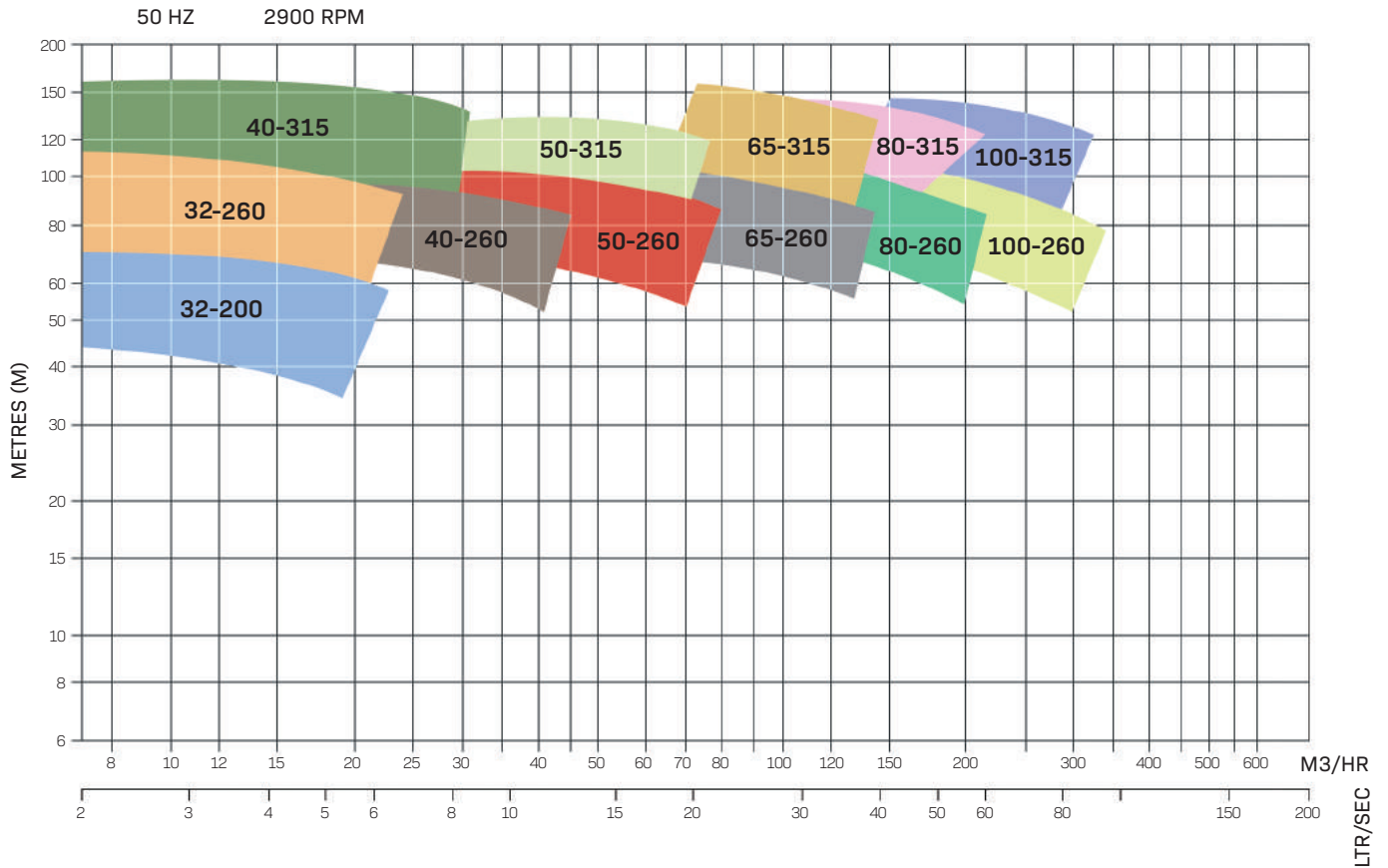
Rated Flow - Q up to 1000 GPM  
Pressure - P up to 229psi  
Temperature - T up to 105 C  
Shaft Sealing Soft Packing



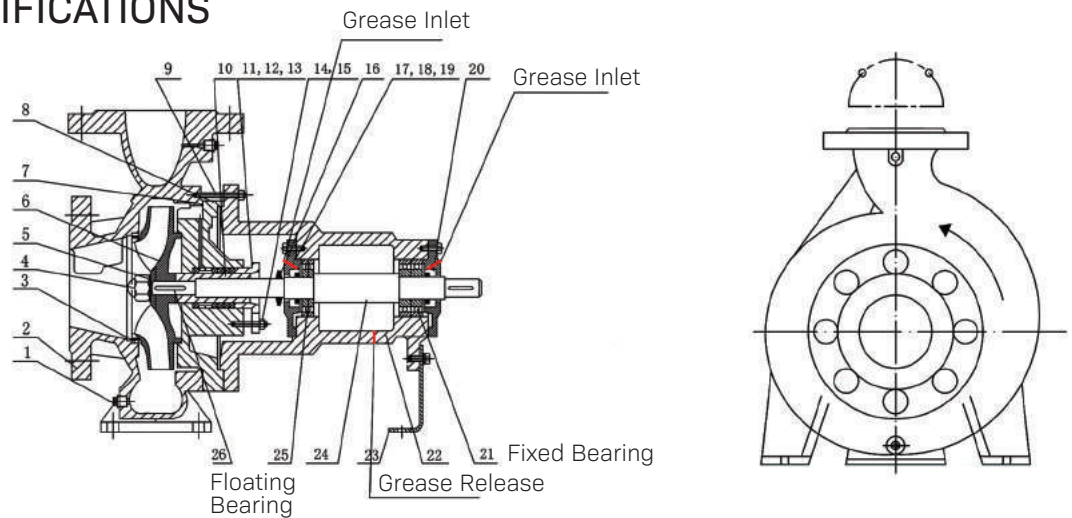
## Features

- Designing applies to NFPA20 Standards and specification in accordance with UL448 and FM approval
- Max shaft power point is attained by hydraulic performance incited of pump cavitation, which truly qualified for NFPA20 requirements, as well as ensure safety and reliability of pump units
- Adaptable of electric motor and combustion engine as prime mover
- Varied revolong speed or performance pumps can be supplied according to user's requests
- Max shaft power point is closed to the point of 150% rated capacity therefore the power and cost are low
- Pressure at shut off point small which require lower pressure rating of fittings or accessories, save cost for whole unit
- Single model covers wide performance range, no need to purchase different models with benefits clients by reducing inventory and shorten delivery

# PRODUCT RANGE



# PRODUCT SPECIFICATIONS



No	Name	Material	GB	Size
1	Casing	Ductile Cast Iron	GGG40	
2	Casing Wear Ring	Brass	C86500	175x160x15
3	Impeller Nut	Stainless Steel	SS304	M24X2
4	Washer	Stainless Steel	SS304	
5	Impeller	Bronze/ SS	C86300/ AISI304	
6	Casing Cover	Ductile Cast Iron	GGG40	
7	Bolts	Stainless Steel	SS304	M12x35
8	Bearing	Steel		SKF 47309BEP
9	Shaft	Steel		

# END SUCTION FIRE PUMP SUBMITTAL



## Fire Pump System

FLOW RATE(GPM)

PRESSURE(BAR)

**ELECTRIC DRIVEN + DIESEL DRIVEN + JOCKEY PUMP**

*Fight Against Fire*

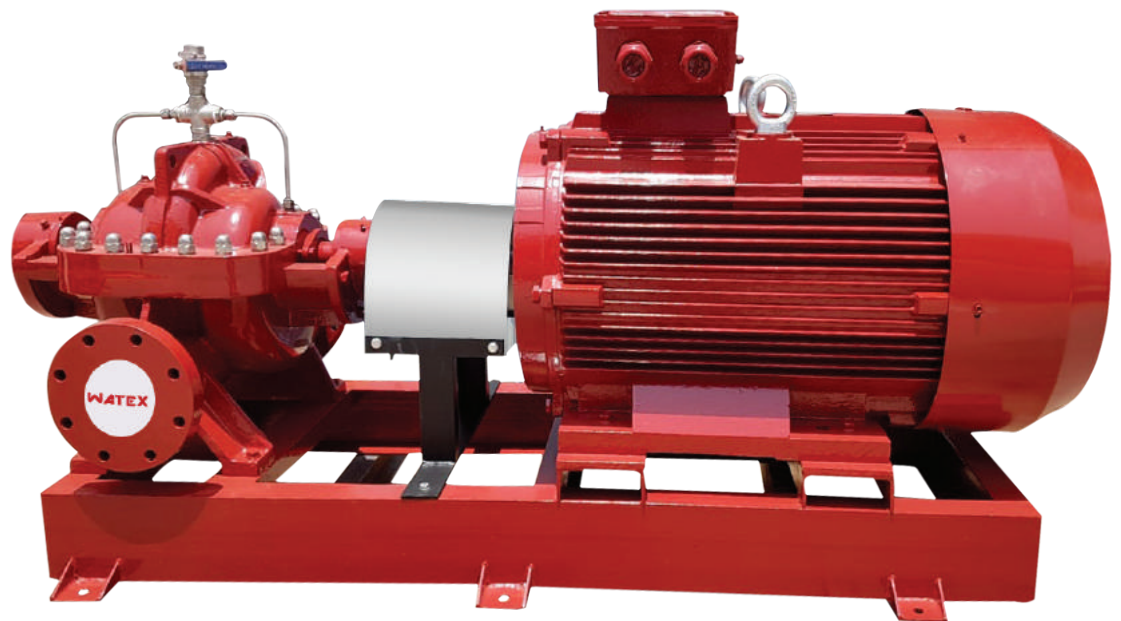
[www.watexindustries.com](http://www.watexindustries.com)

# Non UL Fire Pumps



We provide a wide range of fire pump sets with different capacity range vary from 50 GPM up to 2500 GPM at 5, 6, 7, 8, 9, 10 bar pressure however we have ability to manufacture larger pump capacities as per customer's request. All the pump sets must be fully run tested for to ensure that no leak will occur at the required pressure. Moreover, a thoroughly test is conducted to ensure that the pump set is fully operating at the required capacity. A free of charge testing and commissioning will be provided.

## Approved From Civil Defense Local assembled Fire Pump & Control Panel



## Features

- Highly quality pressure indicator.
- Equipped with local assembly control panel made of high quality electrical component ( ABB, Schneider, LS & Andeli ) with different available IP Ratings:

IP Rating/mm	400*300*200	500*400*200	600*500*200	600*500*250
	700*600*200	1000*1000*300	1200*1000*300	
- Supplied either with or without suction line.
- High quality diesel engine: Diesel engines Flow Range (50 – 2500 GPM)  
Diesel engines pressure range (5 – 20 Bar)
- Equipped with suitable electrical motor
- Equipped with Heavy duty coupling
- Equipped with stainless steel jockey pump
- All the pump parts are equipped with Control fittings (Gate Valve, NRV...).
- Equipped with pressure switches
- Equipped with flexible wires (RR type)



Three quality types of fire pumps are available (as per customer need):

- Diesel, jockey and electrical (E+D+J) assembly complete equipped with or without suction line. All fire pumps are equipped with a pressure tank along with a pressure switch and star delta panel for high rating electrical motors to regulate pressure, guarantee smooth operation and avoid water hammer whenever the pump stops operating. In order to insure a safety operation of the control panel and the power supply all fire pumps are soft starting.
- Diesel / jockey (D+J) assembly complete equipped with or without suction line. All fire pumps are equipped with a pressure tank along with a pressure switch and star delta panel for high rating electrical motors to regulate pressure, guarantee smooth operation and avoid water hammer whenever the pump stops operating.
- Electrical / jockey (E+J) assembly complete equipped with or without suction line. All fire pumps are equipped with a pressure tank along with a pressure switch and star delta panel for high rating electrical motors to regulate pressure, guarantee smooth operation and avoid water hammer whenever the pump stops operating.



# NON UL FIRE PUMP SUBMITTAL



## Fire Pump System

FLOW RATE(GPM)

PRESSURE(BAR)

**ELECTRIC DRIVEN + DIESEL DRIVEN + JOCKEY PUMP**

*Fight Against Fire*

[www.watexindustries.com](http://www.watexindustries.com)

# Fire Fighting Products



# Cabinet

• **Watex Brand**

## Types

Recessed Type  
Surface Type

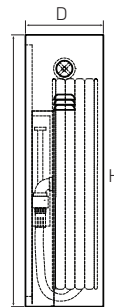
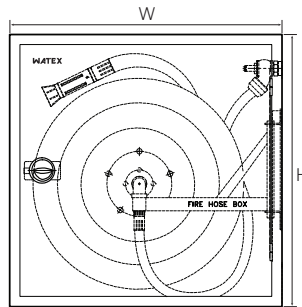
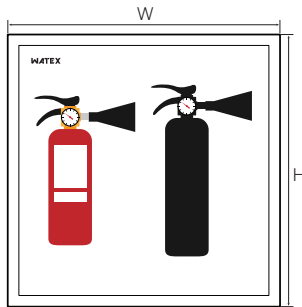
## Material

Mild Steel (MS)  
Stainless Steel (SS)

## Single Door Cabinet

Dimensions

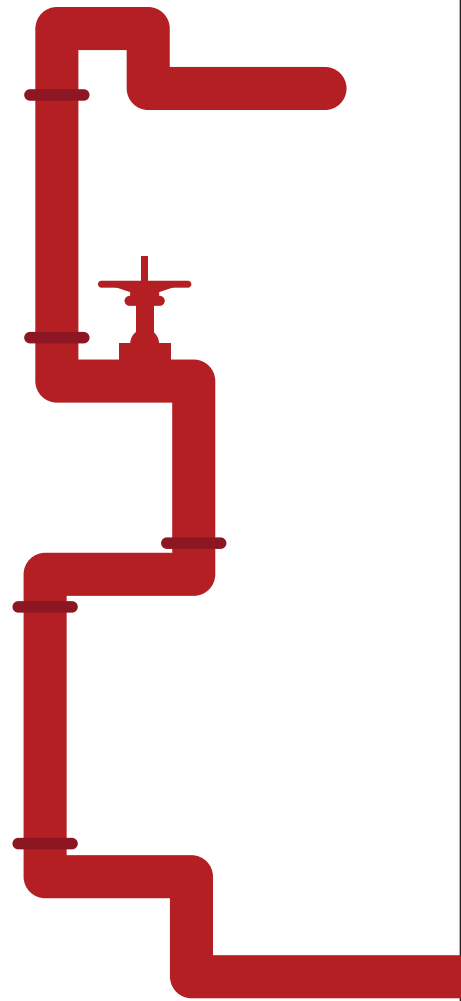
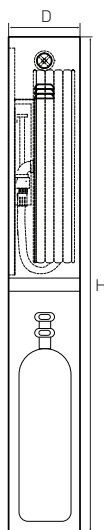
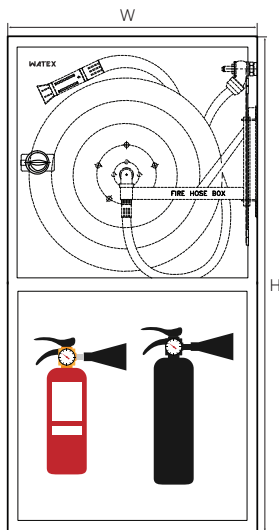
- H:80 W: 80 D: 30  
- As customer need



## Double Door Cabinet

Dimensions

- H:160 W: 80 D: 30  
- As customer need



## Other Types

Breaching inlet

Door  
& Architrave



Glass Door



Recessed  
Type



Door  
& Architrave



# Hose Reel

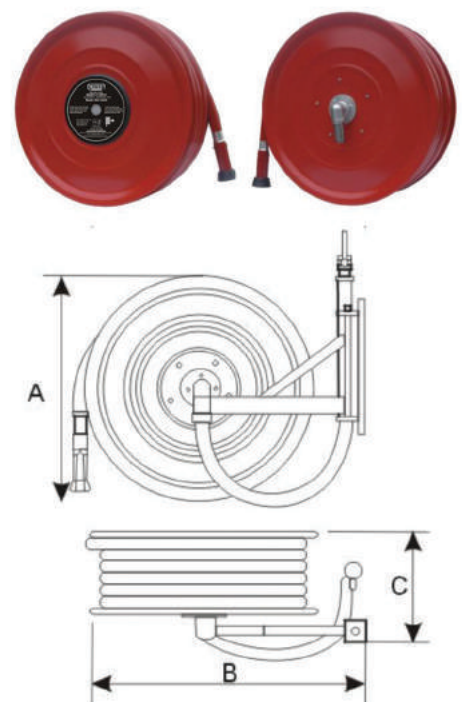
WATEX fire hose reels provide a very effective fire fighting facility with a continuous supply of water available immediately. The construction and performance of a fire hose reel with semi-rigid hose ensures suitable installation in buildings and other construction works for use by the occupants. The fire hose reels are manufactured in both manual and automatic versions to comply to BS EN 671-1:2012 standard



Model No	Type	Hose Diameter & Length	Reel In Height (A in mm)	Reel Width (B in mm)	Reel Depth (C in mm)	Min Cabinet Size (W x H x D) in mm
WMH-25MM	Manual & swinging	1" x 30 M	600	570-580	210	760x720x230
WAH-25MM	Automatic & swinging	1" x 30 M	555	570-580	230	700x700x260

## Features

- Fire hose reel is efficient and reliable for use in all type of buildings. Fire hose reel discs are manufactured using 1.2mm CRCA sheets.
- Painted with red electrostatic powder coating, Fire hose reel drums also stainless steel. Plastic nozzle has jet/spray/shut-off operations.
- Hose reel working pressure is 15 Bar and bursting pressure is of 50 Bar.
- Hose color is red.
- Hose reels drum has ribs to give extra strength and avoid twisting.
- In automatic model the valve open automatically within three revolution of the reel. Manufacture as per BSEN671-1





# NRV CHECK VALVE UL APPROVED

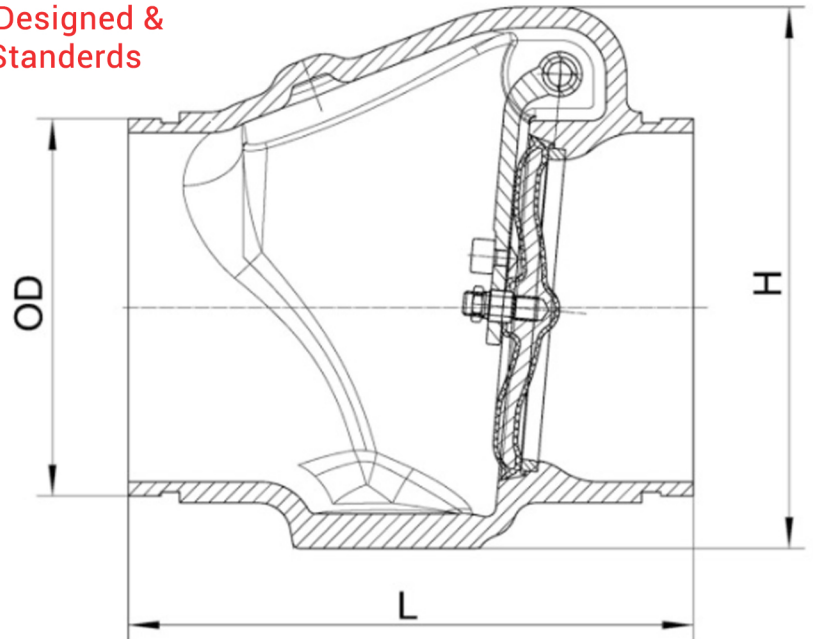
NRV Fire Protection Check Valves with  
First Class High Performance Product Designed &  
Manufacturing According international Standards

Rating Pressure : 362PSI

Grooved Type

UL Approved

Ontor Brand



Dimensions		Size					
		L		H		OD	
mm	inch	mm	inch	mm	inch	mm	inch
50	2	167	6,6	122,5	4,8	60,3	2,4
65	2,5	180	7,1	136,5	5,4	73	2,9
						76,1	3,0
80	3	198	7,8	165,5	6,5	88,9	3,5
100	4	229	9	193,5	7,6	114,3	4,5
						139,7	5,5
125	5	254	10	235,5	9,3	141,3	5,6
						165,1	6,5
150	6	272	10,7	252	9,9	168,3	6,6
						219,1	8,6
200	8	330	13	314,5	12,4		

Name of parts	Material
Body	Ductile iron
Seat Ring	Bronze
Disc	Ductile iron and EPDM
Stopper	EPDM
Clapper Arm	SS304
Hinge Pin	SS304
O-Ring	EPDM
Hinge Bushing	Bronze
Plug	SS304



Technical data

Sizes: 2"~8"

Nominal pressure: 362psi

Grooved standard: AWWA C606

Temperature range: 0 ~ 80°C

**\*All Sizes in Stock**



# OS&Y GATE VALVE UL APPROVED

OS&Y GATE Valves with First Class High Performance Product Designed & Manufacturing According international Standards

Rating Pressure : 362PSI

Grooved Type

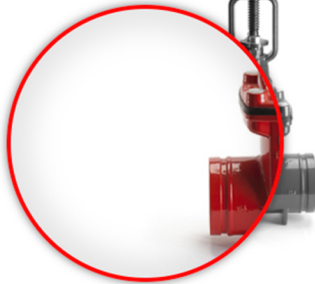
UL Approved

Ontor Brand



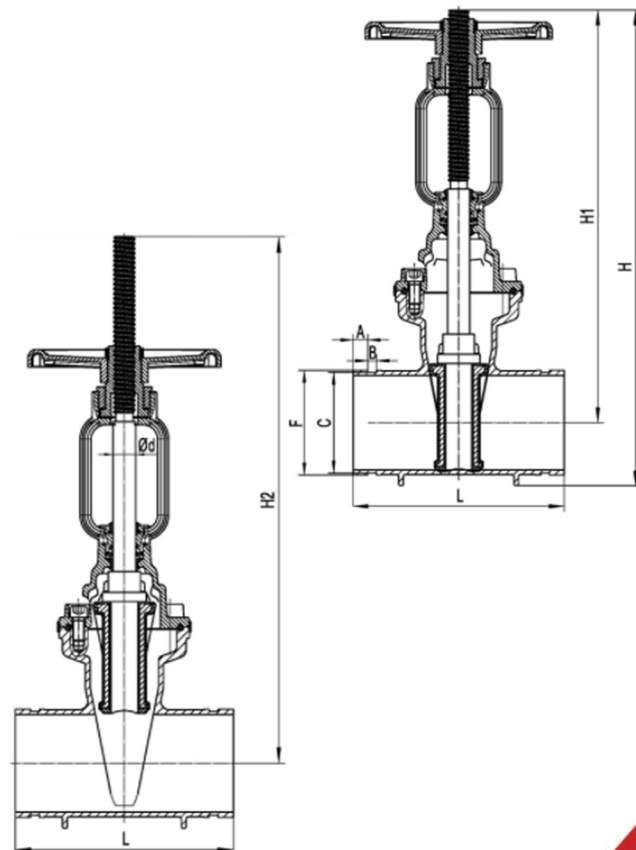
**Technical data** >

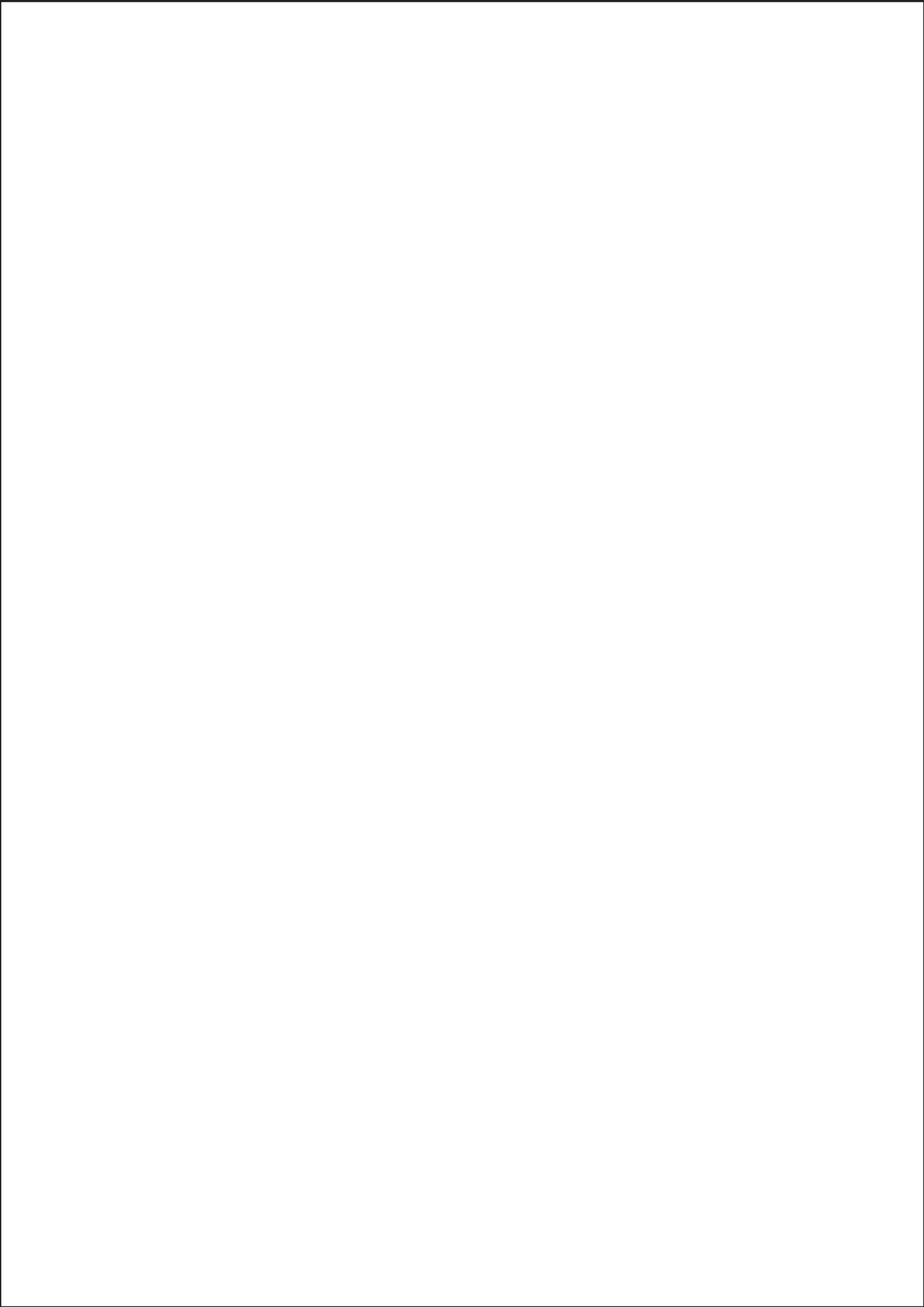
- Sizes: DN50/60-DN200/219
- Working pressure: PN25, 362PSI
- Valve standard: AWWA C515
- Grooved standard: AWWA C606
- Temperature range: 0 - 80 °C



Dimensions		Pressure rating Class	Size (mm)								
DN	inch		F	C	A	B	L	H	H1	H2	Φd
50	2	10/16/25	60,3	57,15	15,88	7,93	178	403,5	358,5	420,5	22
65	2,5	10/16/25	73	69,09	15,88	7,93	190	411	359,5	429,5	22
			76,1	72,26							
80	3	10/16/25	88,9	84,94	15,88	7,93	203	437,5	378	462	22
100	4	10/16/25	108	103,73	15,88	9,53	229	518,5	449,5	553	24
			114,3	110,08							
125	5	10/16/25	133	129,13	15,88	9,53	254	631	549,5	677	28
			139,7	135,48							
			141,3	137,03							
150	6	10/16/25	159	154,5	15,88	9,53	267	686	591,5	747	28
			165,1	160,9							
			168,3	163,96							
200	8	10/16/25	219,1	214,4	19,05	11,10	292	865	735,5	938	32

**\*All Sizes in Stock**









LPCB Certified  
www.lpcb.com T: 0208 333 3333  
LPCB CERTIFIED HOSE REEL  
LPCB Tag No: P31 00000000000000000000  
lpcb@lpcb.com

**WATEX**  
HOSE REELS  
FIRE HOSE & REEL  
**EN 671-1:2012**  
MANUAL SWINGING TYPE  
Model: WMH-25MM

AFTER USE CLOSE THE MAIN VALVE, DRAIN WATER FROM HOSE, REWIND THE HOSE AND CLOSE NOZZLE.

1 OPEN THE MAIN VALVE  
2 PULL HOSE TOWARDS FIRE.  
3 OPEN NOZZLE TO SPRAY/JET AND AIM AT BASE OF FIRE.

Hose Diameter(mm) 25  
Hose Length(m) 30  
Maximum Working Pressure(Mpa) 1.5

EN 671-1  
Certified to 103480a  
YEAR OF MFG: 2018

WATEX PUMPS INDUSTRIES  
Address: O/L New Industrial Area, Upper Lander Road, Enniscorthy  
Email: info@watecpumps.com  
www.watecpumps.com

WATEX - EN 671-1:2012 - A - J - 25

*Fight Against Fire*

*Fight Against Fire*

**WATEX**

📍 Amman ST., New Industrial Area, Ajman, UAE.

☎ +971 55 2148105 ✉ info@watexindustries.com

🌐 [www.watexindustries.com](http://www.watexindustries.com)